

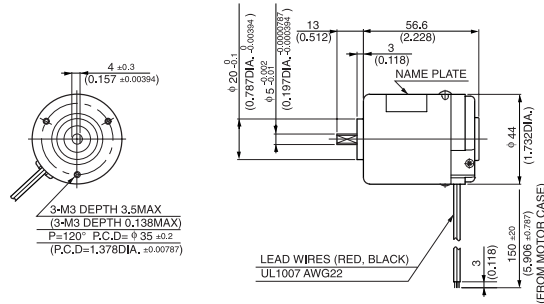
DME44

MODEL CODE	VOLTAGE	OUTPUT	CURRENT
SA	12V	9.2W	1.31A
SB	24V	9.2W	0.65A
BB	24V	14.8W	0.94A

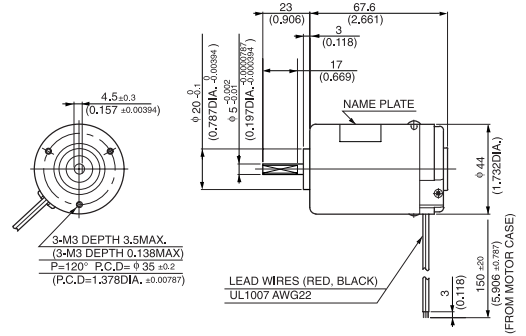


● DIMENSIONS Unit mm(inch)

DME44SA, DME44SB

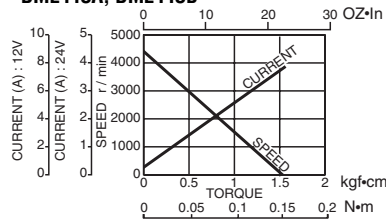


DME44BA, DME44BB

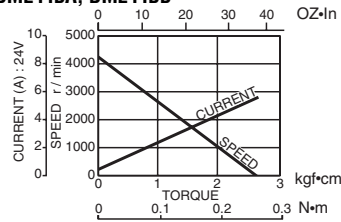


● CURRENT, SPEED-TORQUE CURVE

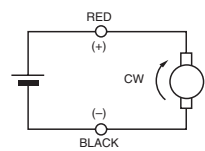
DME44SA, DME44SB



DME44BA, DME44BB



● CONNECTION

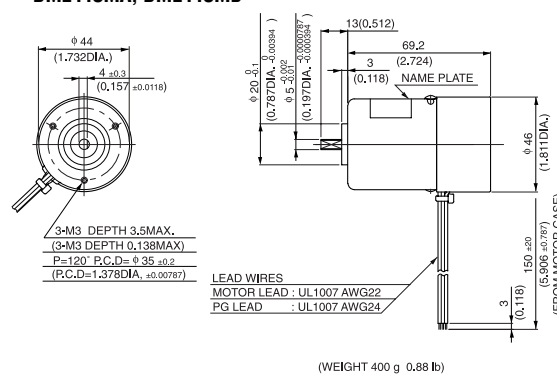


● STANDARD SPECIFICATIONS

Model	Rated					No load		Stall torque		Weight		
	Output W	Voltage V	Torque		Current A	Speed r/min	Current A	Speed r/min	mN-m	oz-in	Weight	
			mN-m	oz-in							g	lb
DME44SA	9.2	12	24	3.47	1.31	3600	0.31	4300	150	22.22	300	0.66
DME44SB	9.2	24	24	3.47	0.65	3600	0.15	4300	150	22.22	300	0.66
DME44BB	14.8	24	39	5.55	0.94	3600	0.16	4300	250	36.11	400	0.88

● REVOLUTION SENSOR MAGNET TYPE

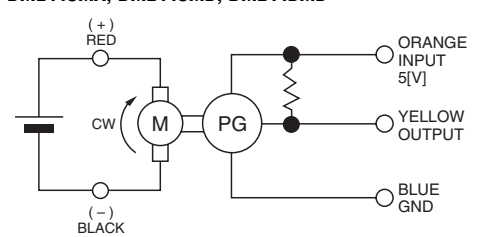
DME44SMA, DME44SMB



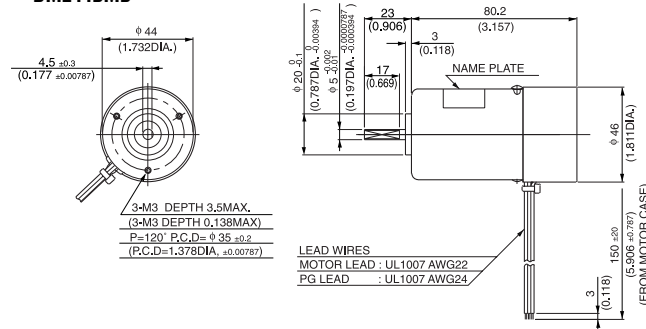
(WEIGHT 400 g 0.88 lb)

● CONNECTION OF REVOLUTION SENSOR

DME44SMA, DME44SMB, DME44BMB



DME44BMB



(WEIGHT 500 g 1.1lb)

● SPECIFICATION OF REVOLUTION SENSOR ARE SHOWN ON PAGE 8.

DME44

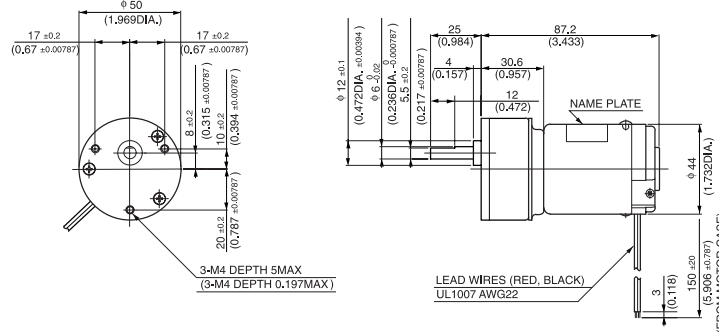
MODEL CODE	VOLTAGE	OUTPUT	CURRENT
SA	12V	9.2W	1.31A
SB	24V	9.2W	0.65A
BB	24V	14.8W	0.94A

WITH GEARBOX 50G



50G

● DIMENSIONS Unit mm(inch) DME44S50G



(WEIGHT 400 g 0.88lb)

● with 50G TYPE GEARBOX

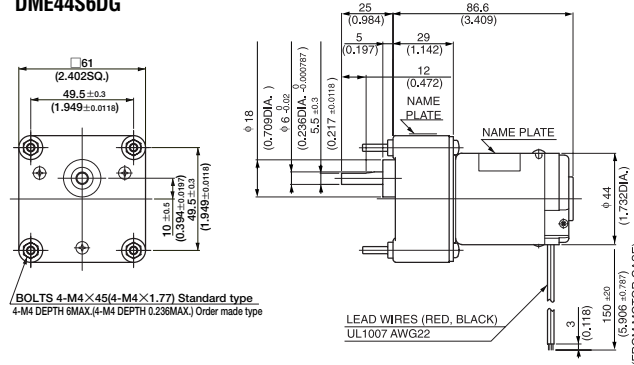
Model	Gear ratio		9	18	*27	*36	*54	*72
	Rated speed	r/min	400	200	133	100	66.6	52.3
DME44S50G <input type="checkbox"/> ☆	Rated torque	N-m	0.18	0.35	0.48	0.64	0.96	0.98
		oz-in	25.00	49.99	68.05	90.27	136.09	138.87

WITH GEARBOX 6DG



6DG

● DIMENSIONS Unit mm(inch) DME44S6DG



(WEIGHT 600 g 1.32 lb)

NOTE:

6DG gearbox are available with either 4.5mm diameter mounting holes or M4 x 6mm tapped holes.

● Gearboxes with 4.5mm diameter mounting holes are available from stock. When ordering, please write the motor model and gearbox model numbers separately, as in the following example:

DME44S6HPB (Pinion shaft motor)
6DG (Gearbox)

● Gearboxes with M4 x 6mm tapped mounting holes are available on request. When ordering, please write the combine motor and gearbox model, as in the following example : DME44S6H B

● with 6DG TYPE GEARBOX MOTOR MODEL DME44S6HP ☆ & GEARBOX MODEL 6DG

Model	Gear ratio		5	12.5	15	*25	*30	*50	*75	*100	150	180	250
	Rated speed	r/min	720	288	240	144	120	72	50.5	39.1	26.7	22.5	16.5
DME44S6HP ☆ & 6DG <input type="checkbox"/>	Rated torque	N-m	0.1	0.25	0.29	0.44	0.53	0.89	0.98	0.98	0.98	0.98	0.98
		oz-in	13.89	34.72	41.66	62.49	74.99	126.37	138.87	138.87	138.87	138.87	138.87
Model	Gear ratio		300	450	*500	*750	*900	*1800					
	Rated speed	r/min	13.8	9.3	8.4	5.6	4.7	2.3					
DME44S6HP ☆ & 6DG <input type="checkbox"/>	Rated torque	N-m	0.98	0.98	0.98	0.98	0.98	0.98					
		oz-in	138.87	138.87	138.87	138.87	138.87	138.87					

NOTE 1: Enter the required reduction ratio in the .
2: *Rotation of gearbox shaft is in reverse of rotation of motor.
3: Enter the required voltage A or B in the ☆.