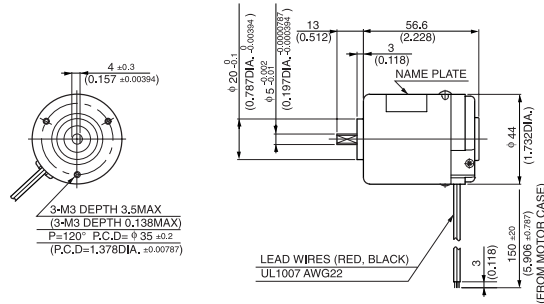


DME44

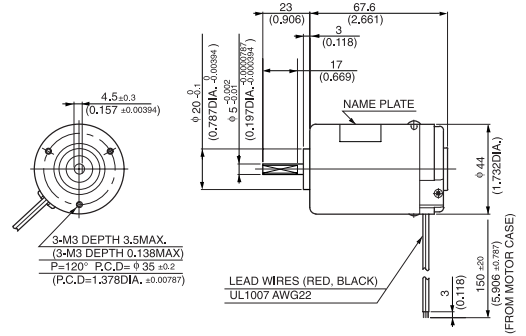
MODEL CODE	VOLTAGE	OUTPUT	CURRENT
SA	12V	9.2W	1.31A
SB	24V	9.2W	0.65A
BB	24V	14.8W	0.94A



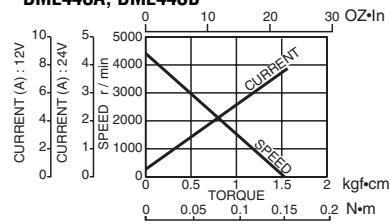
● DIMENSIONS Unit mm(inch) DME44SA, DME44SB



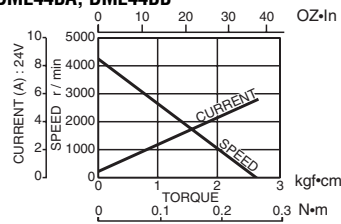
DME44BA, DME44BB



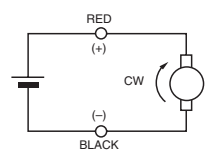
● CURRENT, SPEED-TORQUE CURVE DME44SA, DME44SB



DME44BA, DME44BB



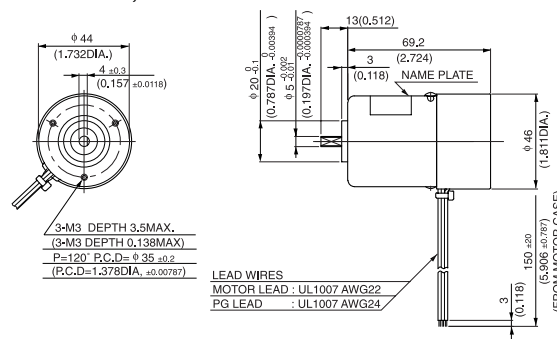
● CONNECTION



● STANDARD SPECIFICATIONS

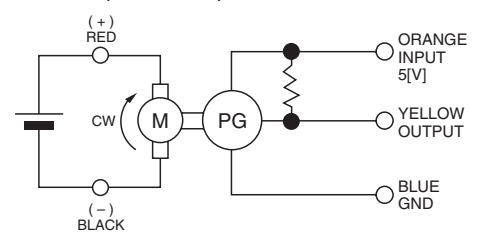
Model	Rated					No load		Stall torque		Weight		
	Output W	Voltage V	Torque		Current A	Speed r/min	Current A	Speed r/min	mN-m	oz-in	Weight	
			mN-m	oz-in							g	lb
DME44SA	9.2	12	24	3.47	1.31	3600	0.31	4300	150	22.22	300	0.66
DME44SB	9.2	24	24	3.47	0.65	3600	0.15	4300	150	22.22	300	0.66
DME44BB	14.8	24	39	5.55	0.94	3600	0.16	4300	250	36.11	400	0.88

● REVOLUTION SENSOR MAGNET TYPE DME44SMA, DME44SMB

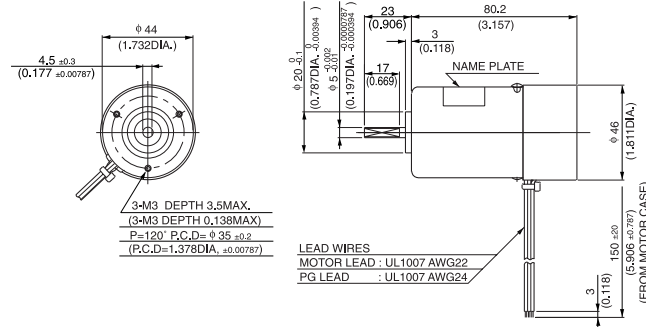


(WEIGHT 400 g 0.88 lb)

● CONNECTION OF REVOLUTION SENSOR DME44SMA, DME44SMB, DME44BMB



DME44BMB



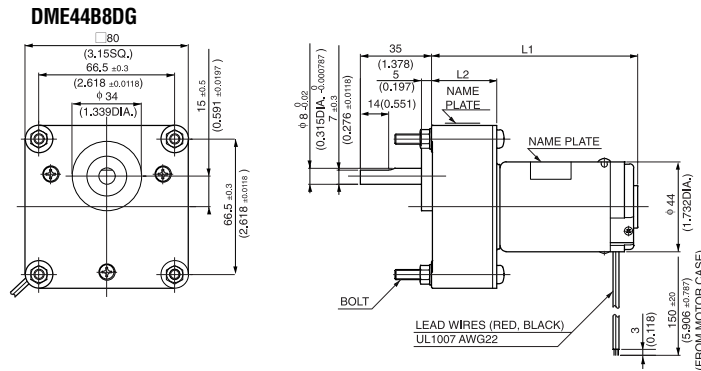
(WEIGHT 500 g 1.1lb)

● SPECIFICATION OF REVOLUTION SENSOR ARE SHOWN ON PAGE 8.

DME44

WITH GEARBOX
8DG

MODEL CODE	VOLTAGE	OUTPUT	CURRENT
SA	12V	9.2W	1.31A
SB	24V	9.2W	0.65A
BB	24V	14.8W	0.94A



GEAR RATIO	L1		L2		BOLT		WEIGHT	
	(mm)	(inch)	(mm)	(inch)	(mm)	(inch)	kg	lb
30~150	101.1	3.98	32	1.26	M5X50	M5X1.969	0.9	1.98
250~1800	111.1	4.374	42	1.654	M5X60	M5X2.362	1.0	2.2

● with 8DG TYPE GEARBOX MOTOR MODEL **DME44S8HP**☆, **DME44B8HPB** & GEARBOX MODEL **8DG**□

Model	Gear ratio		*30	*50	*75	*90	*100	*150	250
	DME44S8HP ☆ & 8DG □	Rated speed	r/min	120	72	48	40	36	24
Rated torque		N·m	0.53	0.89	1.3	1.6	1.8	2.7	3.9
	oz·in	74.99	126.37	180.53	222.19	249.97	374.95	555.49	
DME44B8HPB & 8DG □	Rated speed	r/min	120	72	48	40	36	24.4	15.5
	Rated torque	N·m	0.85	1.4	2.1	2.5	2.8	3.9	3.9
oz·in		120.82	194.42	305.52	361.07	402.73	555.49	555.49	

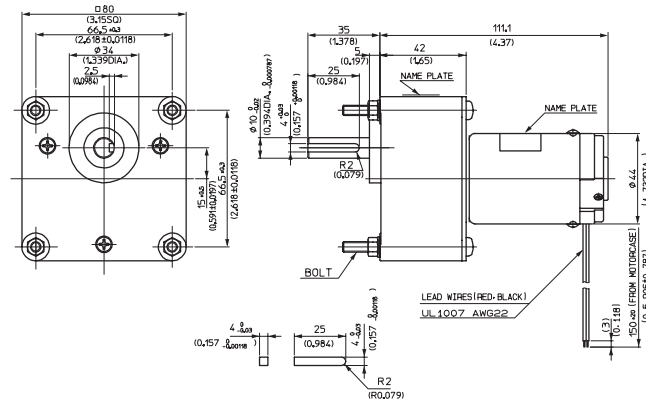
Model	Gear ratio		300	*500	*750	*1800
	Rated speed	r/min	12.4	7.8	5.4	2.3
DME44S8HP ☆ & 8DG □	Rated torque	N·m	3.9	3.9	3.9	3.9
		oz·in	555.49	555.49	555.49	555.49
DME44B8HPB & 8DG □	Rated speed	r/min	13.1	8	5.5	2.3
	Rated torque	N·m	3.9	3.9	3.9	3.9
oz·in		555.49	555.49	555.49	555.49	

WITH GEARBOX
8DGF



8DGF

● DIMENSIONS Unit mm(inch)
DME44B8DGF



NOTE :
When ordering, please write the motor model and gearbox model numbers separately, as in the following example:
DME44B8HFPB (Pinion shaft motor)
8DGF (Gearbox)

GEAR RATIO	BOLT		WEIGHT	
	(mm)	(inch)	kg	lb
25~150	M5X60	M5X2.36	1.0	2.2

● with 8DGF TYPE GEARBOX MOTOR MODEL **DME44B8HFPB** & GEARBOX MODEL **8DGF**□F

Model	Gear ratio		*25	*30	50	75	100	150
	DME44B8HPB & 8DGF □F	Rated speed	r/min	144	120	72	48	36
Rated torque		N·m	0.71	0.85	1.3	1.9	2.5	3.8
	oz·in	101.38	120.82	194.42	263.86	361.07	541.60	

NOTE
1: Enter the required reduction ratio in the □.
2: *Rotation of gearbox shaft is in reverse of rotation of motor.
3: Enter the required voltage A or B in the ☆.