

2-Phase Hybrid Stepping Motor

1.8°

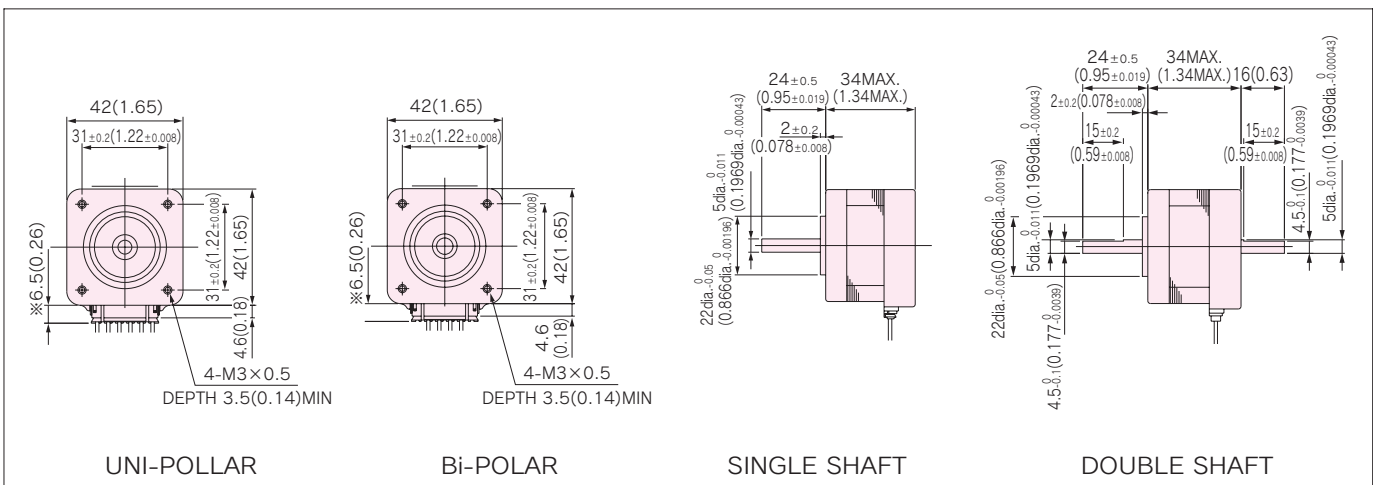
KH42 series

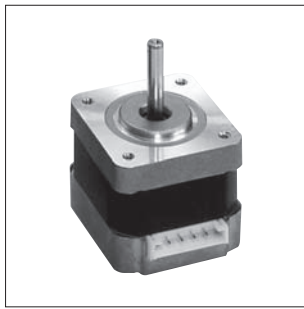
HIGH TORQUE, LOW VIBRATION AND LOW NOISE

STANDARD SPECIFICATIONS

MODEL	KH42HM2				
	SINGLE SHAFT	-901	-902	-903	-951
	DOUBLE SHAFT	-911	-912	-913	-961
DRIVE METHOD	————	UNI-POLAR			BI-POLAR
NUMBER OF PHASES	————	2			2
STEP ANGLE	deg./step	1.8			1.8
VOLTAGE	V	3.06	5.57	6.76	3.10
CURRENT	A/PHASE	0.9	0.58	0.46	1.0
WINDING RESISTANCE	Ω/PHASE	3.4	9.6	14.7	3.1
INDUCTANCE	mH/PHASE	2.4	6.0	9.3	4.3
HOLDING TORQUE	mN · m	140	140	140	197
	oz · in	20	20	20	20
DETENT TORQUE	mN · m	11.8	11.8	11.8	11.8
	oz · in	1.7	1.7	1.7	2.1
ROTOR INERTIA	g · cm ²	38	38	38	38
	oz · in ²	0.21	0.21	0.21	0.21
WEIGHTS	g	200	200	200	200
	lb	0.44	0.44	0.44	0.57
INSULATION CLASS	————	JIS Class E (120°C 248° F) (UL VALUE : CLASS B-130°C 266° F)			
INSULATION RESISTANCE	————	500VDC 100MΩmin.			
DIELECTRIC STRENGTH	————	500VAC 50HZ 1 min.			
OPERATING TEMP. RANGE	°C	0 to 50			
ALLOWABLE TEMP.RISE	K	70			

DIMENSIONS unit = mm (inch)





Features

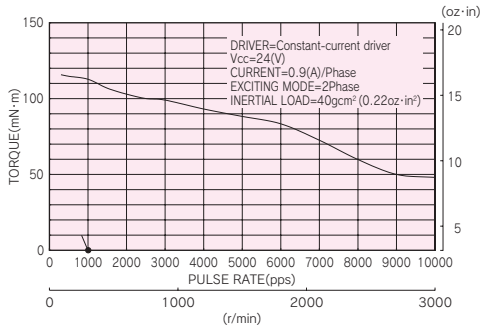
- Improved Dynamic Torque
(1.2 times torque of our previous model is generated at 300 r/min, on model : KH42JM2-901)
- Lowered Vibration & Noise Level
(by increased stiffness of body construction)
- Improved Efficiency
(1.1 times of our previous model, by high grade materials.)

■ TORQUE CHARACTERISTICS vs. PULSE RATE

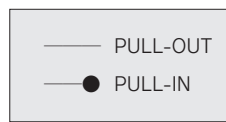
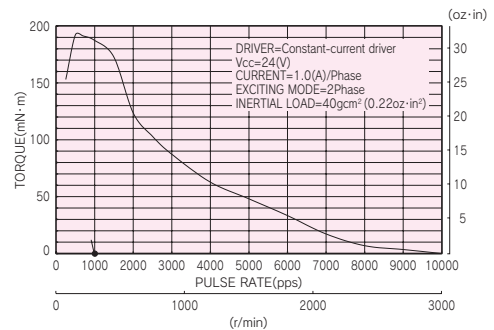
UNI-POLAR

BI-POLAR

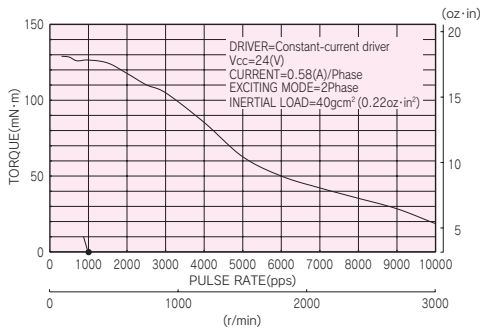
KH42HM2-901, 911



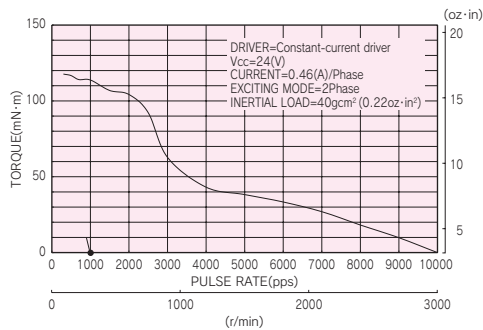
KH42HM2-951, 961



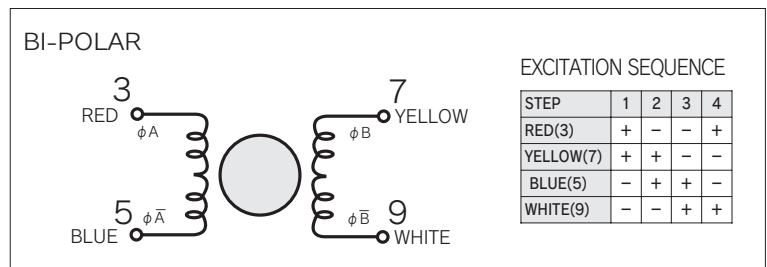
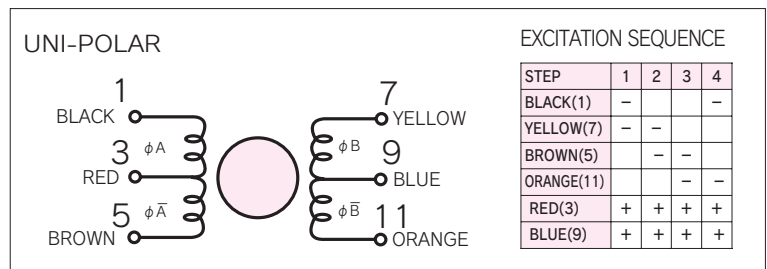
KH42HM2-902, 912



KH42HM2-903, 913



■ CONNECTION DIAGRAMS



■ CONNECTION CABLE TO MOTOR unit = mm (inch)

