

2-Phase Hybrid Stepping Motor

1.8°

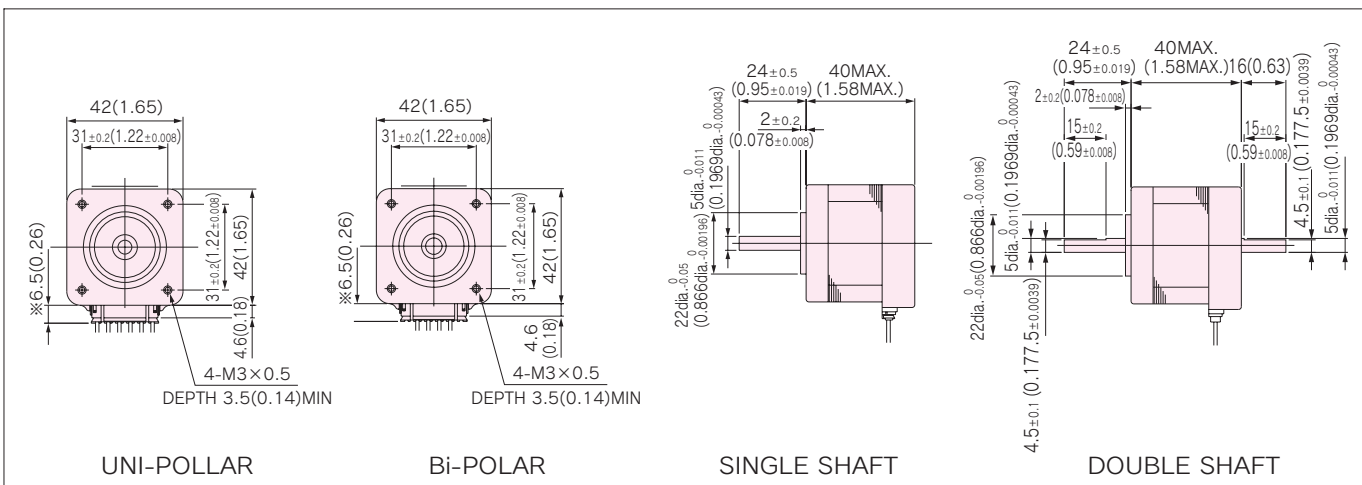
KH42 series

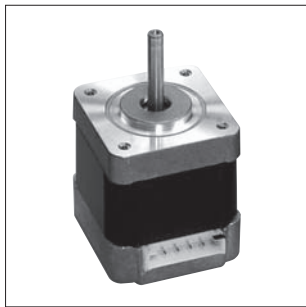
HIGH TORQUE, LOW VIBRATION AND LOW NOISE

STANDARD SPECIFICATIONS

MODEL	KH42JM2				
	SINGLE SHAFT	-901	-902	-903	-951
	DOUBLE SHAFT	-911	-912	-913	-961
DRIVE METHOD	————	UNI-POLAR			BI-POLAR
NUMBER OF PHASES	————	2			2
STEP ANGLE	deg./step	1.8			1.8
VOLTAGE	V	3.42	4.4	9.25	4.59
CURRENT	A/PHASE	1.2	0.88	0.5	0.85
WINDING RESISTANCE	Ω/PHASE	2.85	5.5	18.5	5.4
INDUCTANCE	mH/PHASE	2.5	5.1	16.3	9.3
HOLDING TORQUE	mN · m	236	236	236	314
	oz · in	33	33	33	44
DETENT TORQUE	mN · m	14.7	14.7	14.7	14.7
	oz · in	2.1	2.1	2.1	2.1
ROTOR INERTIA	g · cm ²	56	56	56	56
	oz · in ²	0.3	0.3	0.3	0.3
WEIGHTS	g	260	260	260	260
	lb	0.57	0.57	0.57	0.57
INSULATION CLASS	————	JIS Class E (120°C 248° F) (UL VALUE : CLASS B-130°C 266° F)			
INSULATION RESISTANCE	————	500VDC 100MΩmin.			
DIELECTRIC STRENGTH	————	500VAC 50HZ 1min.			
OPERATING TEMP. RANGE	°C	0 to 50			
ALLOWABLE TEMP. RISE	K	70			

DIMENSIONS unit = mm (inch)





Features

- Improved Dynamic Torque
(1.2 times torque of our previous model is generated at 300 r/min, on model : KH42JM2-901)
- Lowered Vibration & Noise Level
(by increased stiffness of body construction)
- Improved Efficiency
(1.1 times of our previous model, by high grade materials.)

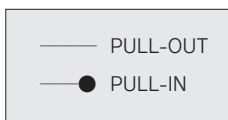
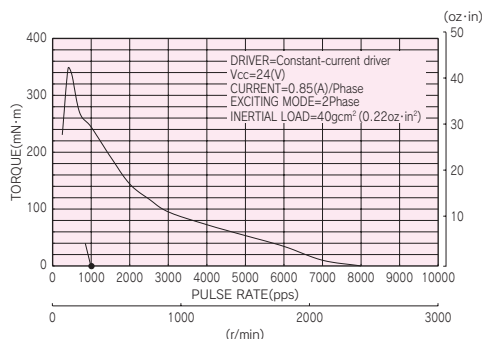
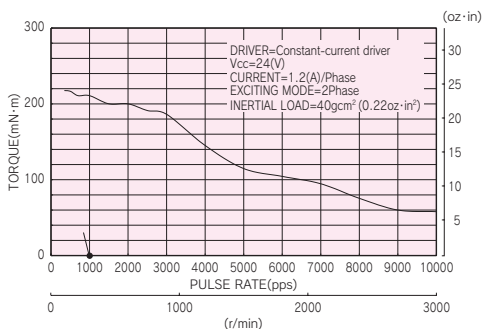
■ TORQUE CHARACTERISTICS vs. PULSE RATE

UNI-POLAR

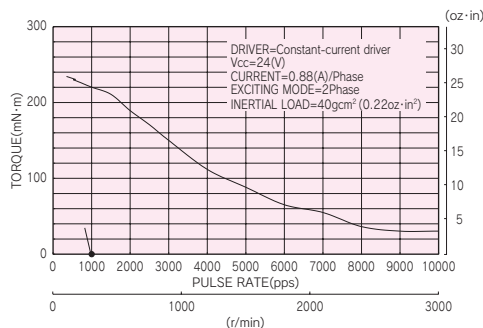
BI-POLAR

KH42JM2-901, 911

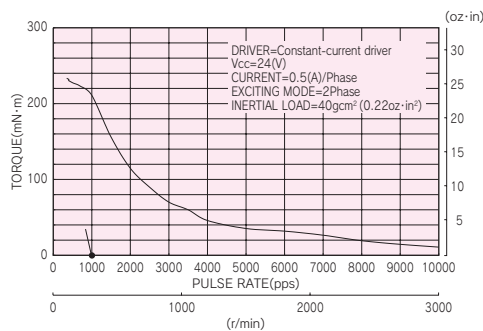
KH42JM2-951, 961



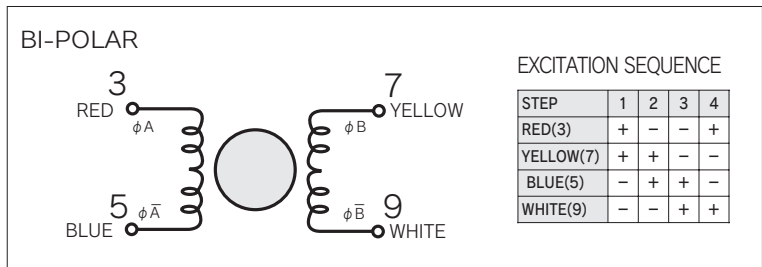
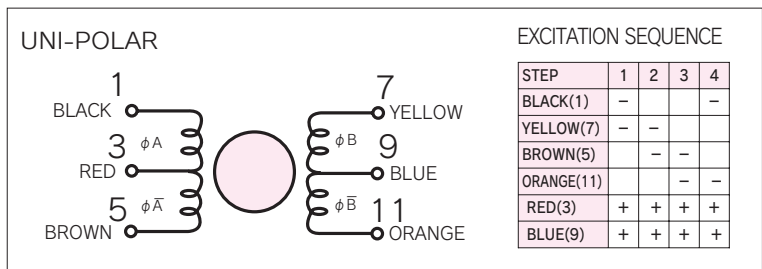
KH42JM2-902, 912



KH42JM2-903, 913



■ CONNECTION DIAGRAMS



■ CONNECTION CABLE TO MOTOR unit = mm (inch)

