

AC Silent Fan

**SCNA**



□ 120 × φ 128 × 38

(□ 4.7" × φ 5.0" × 1.5")

Max. airflow: 2.6 m<sup>3</sup>/min (50 Hz)  
3.1 m<sup>3</sup>/min (60 Hz)

Max. static pressure:

80 Pa (50 Hz) 80 Pa (60 Hz)  
Mass: 550 g

Fan model code

SCNA2B5

SCNA47D5

SCNA48D5

SCNA52B5

SCNA55B5

SCNA60B5

SCNJ47D5

SCNJ48D5

SCNJ55B5

SCNJ60B5

**Standard specification**

(\*1: Rated values appear on name plate)

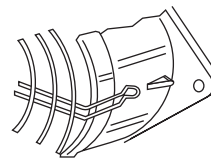
Max. Airflow		Max. Static Pressure		Noise	Speed	Rated Vol.	Freq.	Input	Current	Lock	Model Code				
m <sup>3</sup> /min	CFM	Pa	inH <sub>2</sub> O	dB	min <sup>-1</sup>	V (±10%)	Hz	W *1	mA*1	Current mA	Lead Wire Type	Std*2	Lead Wire Type	Std*2	
2.6/ 3.1	92/ 109	80/ 80	0.32/ 0.32	38/ 42	2800/ 3300	100	50/	14/12	200/180	300/270	SCNA55B5	UC			
								15/13	200/180	300/270			SCNJ55B5	P	
								14/12	110/90	155/135	SCNA60B5	UC			
								15/13	110/90	155/135			SCNJ60B5	P	
								115	16/13	200/170	300/260	SCNA2B5	UC		
								208-230	14/13	110/90	160/140	SCNA52B5	UC		
1.7/ 1.9	60/ 67	25/ 26	0.10/ 0.11	28/ 31	1890/ 2030	100-120	50/	9/8.5	110/90	110/95	SCNA47D5	UC			
						100-120		8/5.8	110/90	110/95			SCNJ47D5	P	
						200-240		9/8.5	60/50	60/50	SCNA48D5	UC			
						200-240		8/5.8	60/50	60/50			SCNJ48D5	P	

- Figures in the table are average measured values. Please request the product delivery specification when preparing a purchase specification.
- \*2: The symbols in the standards column denote that they are registered in the following standards files, U: UL E48889, C: CSA LR49399, LR108118
- \*2: Products conforming to the specifications of the Electrical Appliance and Material Safety Law (Japan) can be used in case the products are assembled in electric appliances used in Japan. (Products marked with the (PSE) mark)

**General specification**

Materials Used	Venturi: Aluminum alloy die casting Propeller: Glass fiber reinforced polycarbonate resin Bearing: Double - sided shielded ball bearing
Motor	Shaded pole induction motor Protection type: Impedance protection
Common Elec. Spec.	See pages G-12.
Usage Range	Rated voltage ± 10 %
Operating Temp. Range	-20 °C ~ +60 °C
Standard Carton	20 to a carton of (565 x 310 x 180) mm, mass 11.5 kg

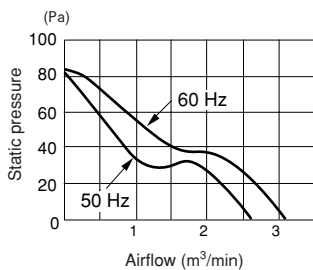
● Guard mounting



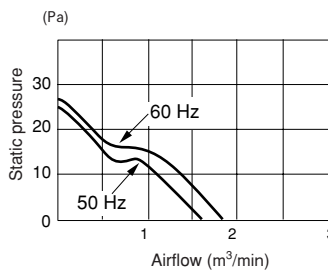
The guard for the intake side (SCN guard) can be mounted with one touch without using a tool.

**Standard airflow and static pressure characteristics (At rated voltage)**

SCN□□B5

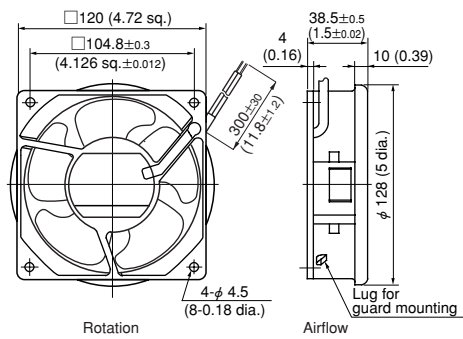


SCN□□D5



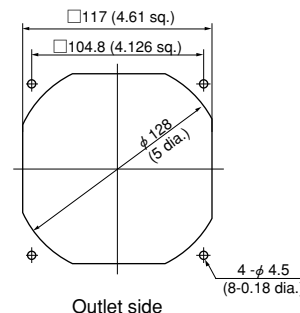
**External dimensions in mm (inches)**

● Lead wire type



Lead wire specification  
SCNJ series: Heat resistant PVC 0.75 mm<sup>2</sup> (30 conductors, 0.18 dia.)  
SCNA series: AWG22 UL1015

**Mounting hole dimensions in mm (inches)**  
[Recommendation]



**Options (sold separately)**

- Guard: F120UL guard (Outlet side)
- Guard: SCN guard (Intake side)

Fans & Blowers

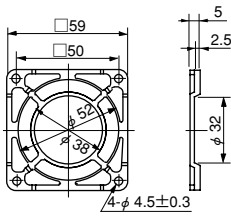
Axial DC fans Centrifugal

Silent

AC fans Axial Centrifugal

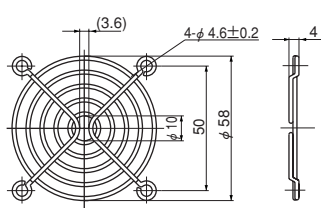
Option

**F60P Guard (Mass 4 g)**



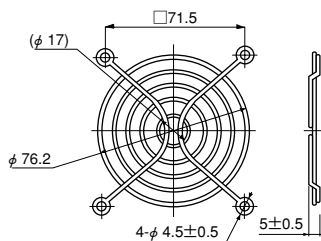
Material: Polycarbonate (black)  
UL94V-2

**F60UL Guard (Mass 12 g)**



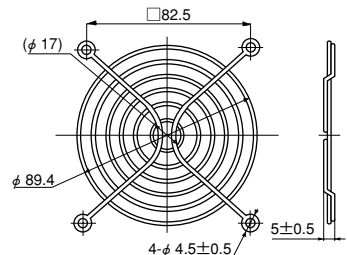
Material: Mild steel wire 1.6 dia.  
Surface treatment:  
Nickel chromium plating

**F80UL Guard (Mass 14 g)**



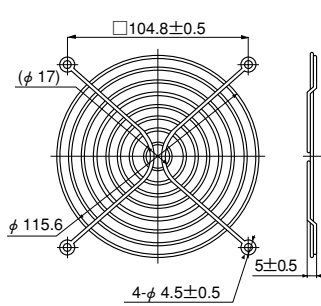
Material: Mild steel wire 1.6 dia.  
Surface treatment:  
Nickel chromium plating

**F92UL Guard (Mass 16 g)**



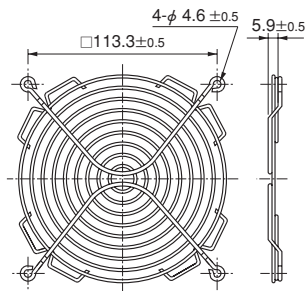
Material: Mild steel wire 1.6 dia.  
Surface treatment:  
Nickel chromium plating

**F120UL Guard (Mass 29 g)**



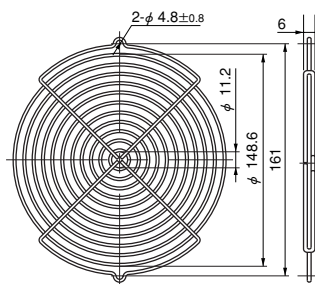
Material: Mild steel wire 1.6 dia.  
Surface treatment:  
Nickel chromium plating

**F127UL Guard**



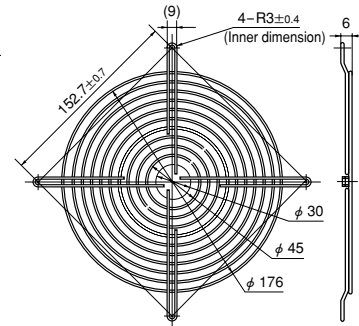
Material: Mild steel wire 1.6 dia.  
Surface treatment:  
Nickel chromium plating

**GUARD 172**



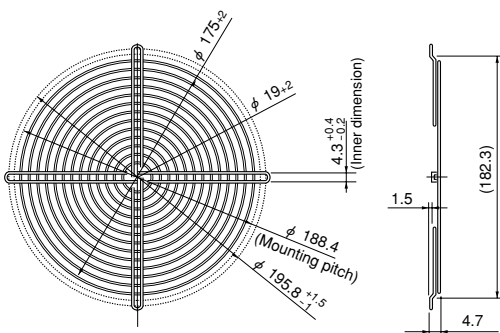
Material: Mild steel wire 2 dia.  
Surface treatment:  
Nickel chromium plating

**F180UL Guard**



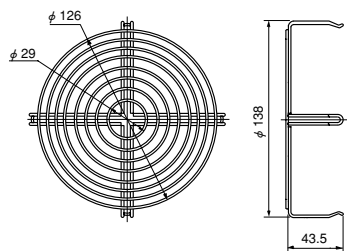
Material: Mild steel wire 1.6 dia.  
Surface treatment:  
Nickel chromium plating

**F200UL Guard (Mass 82 g)**



Material: Mild steel wire 1.6 dia.  
Surface treatment:  
Nickel chromium plating

**SCN Guard (Mass 55 g)**



Material: Mild steel wire 1.6 dia.  
Surface treatment:  
Nickel chromium plating

• Guard special for intake side of  
SCN (metal venturi) fans.

List of mating fan series

Guard	F60P	F60UL	F80UL	F92UL	F120UL	F127UL	GUARD 172	F180UL	F200UL	SCN
SCN					○*1					○*2
AC Axial Fans			○	○						
VE			○							
WE				○						
KA				○						
CU					○					
CN					○					
MA							○			
PA							○			
DC Axial Fans	○	○	○	○	○	○	○	○	○	○
TUDC	○	○								
PUDC			○							
KUDC				○						
DO925C				○						
KLDC				○						
CUDC					○					
D1225C					○					
DC Axial Fans										
CNDC					○					
D1238T					○					
D1238B					○					
D1338B						○				
D1338S						○				
D1751M							○			
D1751S							○			
G0638D		○								
G0838C			○							
G0938B				○						
G1238B					○					
G1751M								○		

\*1: Can be installed only on outlet side. \*2: Can be installed only on intake side.  
All guards conform to the UL standard when combined with NIDEC SERVO fans.  
The installation of a filter, guard and other accessories will constitute a ventilating load, reducing the airflow. Select a suitable guard, taking into consideration the increase in air resistance. (See Figs. 12 and 13 on page G-7.)